



PRODUCT DESCRIPTION

Solid wood frames are accented with contrasting metal detail, work in a wide variety of styling from nautical to craftsman to country chic. Available in two finish combinations, Antique Pecan wood with Satin Brass accents and Amber Fiber shades and Wenge wood with Polished Nickel accents and white fiber shades.

FINISHES OPTION

- Antique Pecan / Satin Brass
- Wenge / Polished Nickel

MATERIAL

Steel, Wood

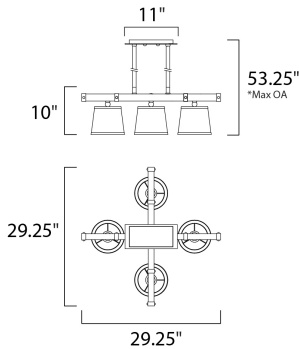
RATINGS

cULus
Dry Location



ADDITIONAL

ADJUSTABLE
OPERATING TEMPERATURE:
-20°C (-4°F), 40°C (104°F)



MEASUREMENTS

- DIMENSION : 29.25" L x 29.25" W x 10" H
- MAX OAH : 53.25" OAH
- CANOPY : 5.25" W x 1" H x 11" L
- HANGING WEIGHT : 13.42 lb

LAMPING

- INPUT VOLTAGE : 120V
- LUMENS : 0 Rated
- BULB : 4 x 60W Incandescent E26 Medium , 240W Total
- BULB INCLUDED : (Not Included)
- DIMMABLE : Yes

*max overall height of fixture

Always consult a qualified electrician before installing any lighting product.



WESTERN DISTRIBUTION CENTER (HEADQUARTER)
253 NORTH VINELAND AVE | CITY OF INDUSTRY, CA 91746
EASTERN DISTRIBUTION CENTER
4200 SHIRLEY DR. | ATLANTA, GA 30336
P. 626.956.4200 | F. 626.956.4225 | maximlighting.com